

IBM Research

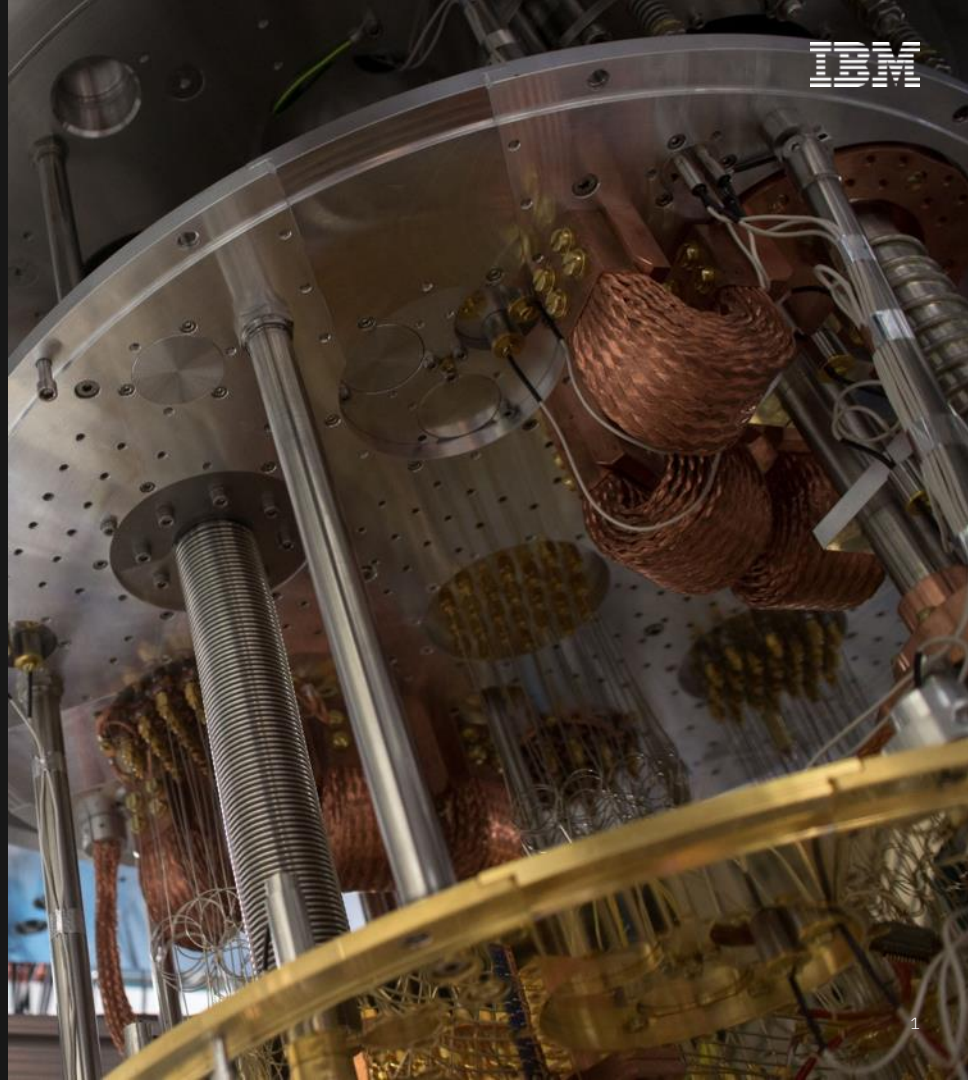
How Can Science and Technology Contribute to The UK's Industrial Strategy?

Dr Peter Waggett
Director of Research IBM UK Ltd

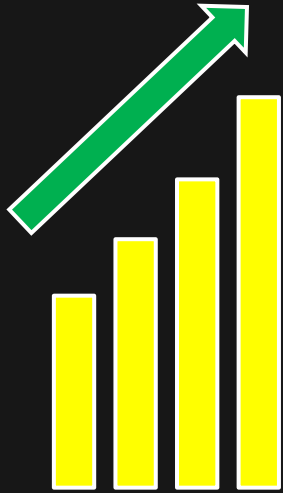
IBM Q

© 2019 IBM Corporation

#IBMQ

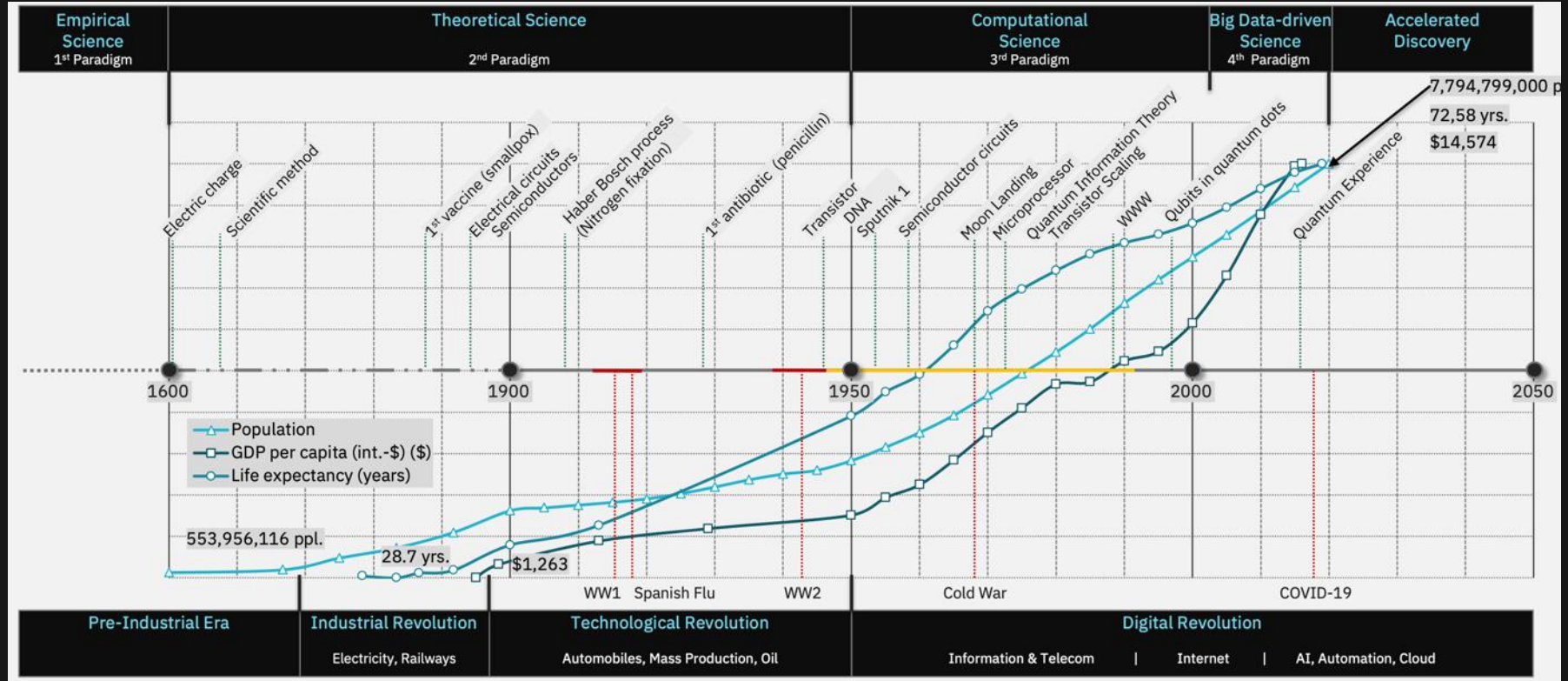


The Impact of Science and Technology has Never Been as Important or Needed as it is Now

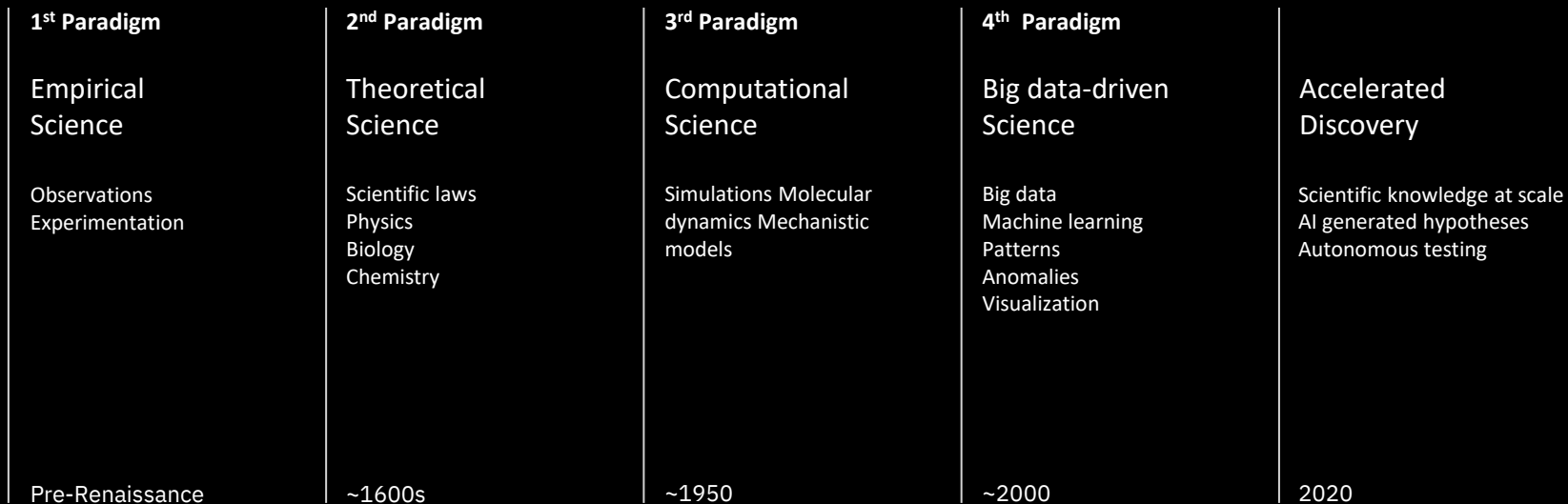


The scientific method has been humanity's best model for discovery.

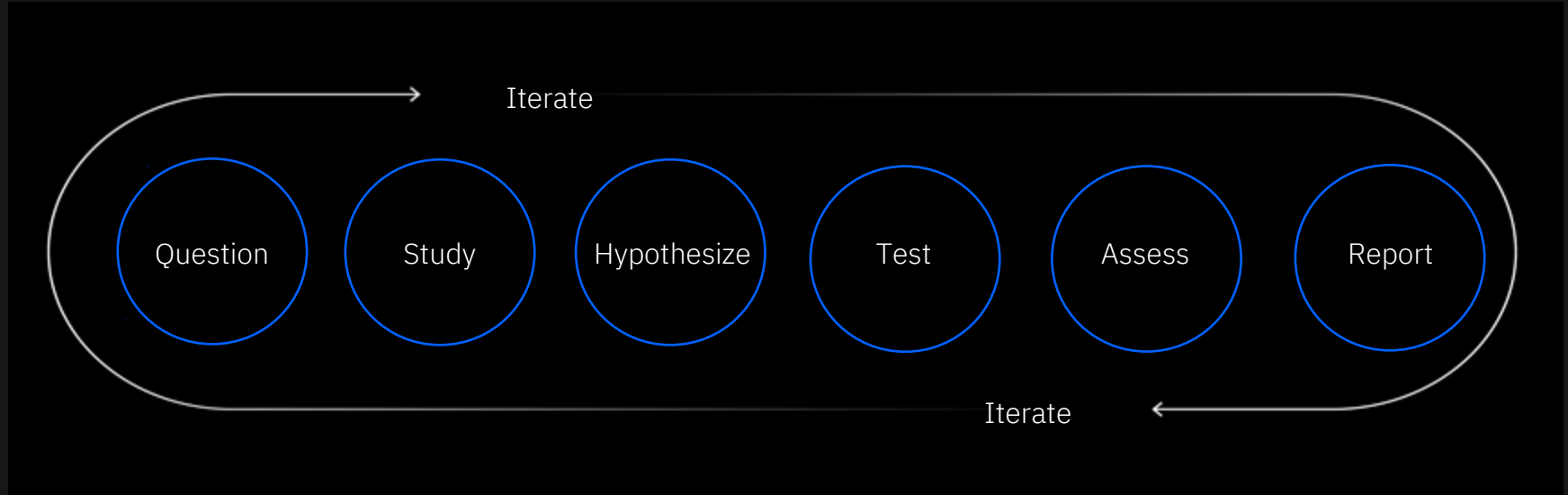
Science has solved some of the world's most difficult problems



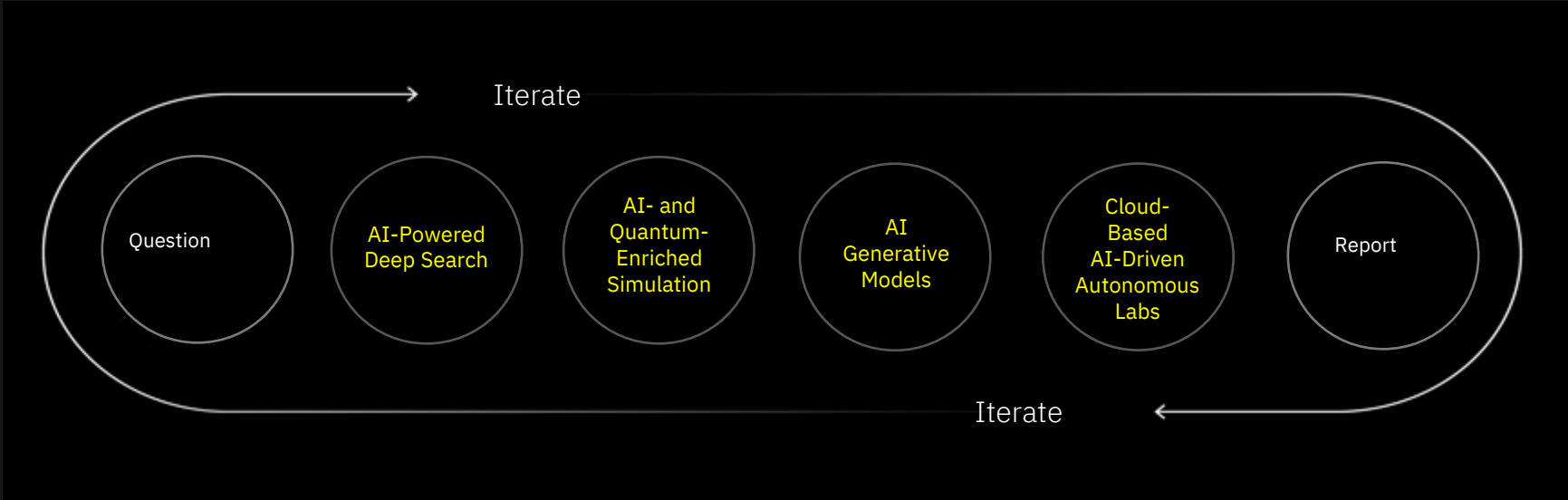
... and it has evolved over time and we are now entering a new paradigm of discovery.



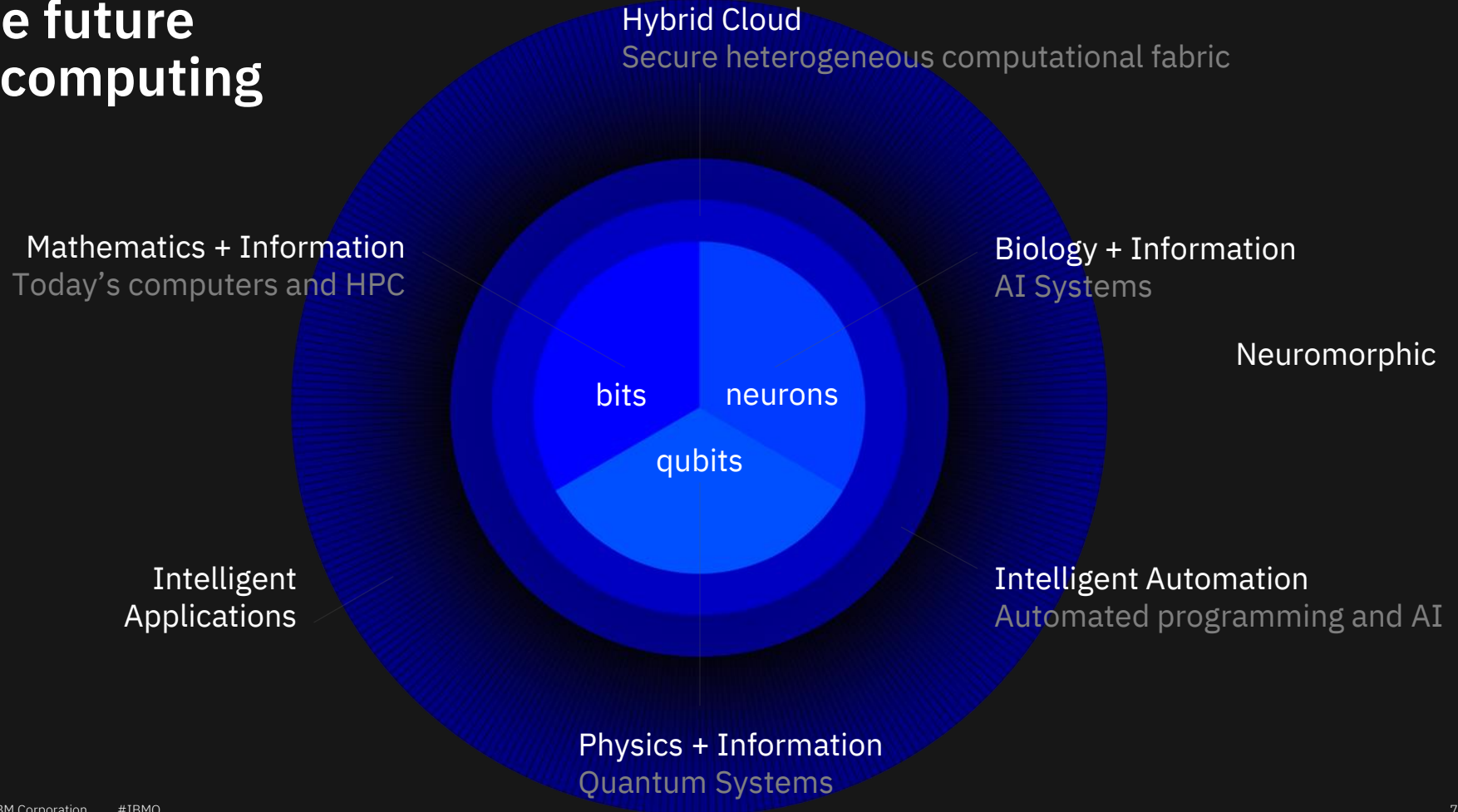
We supercharge the scientific method ...



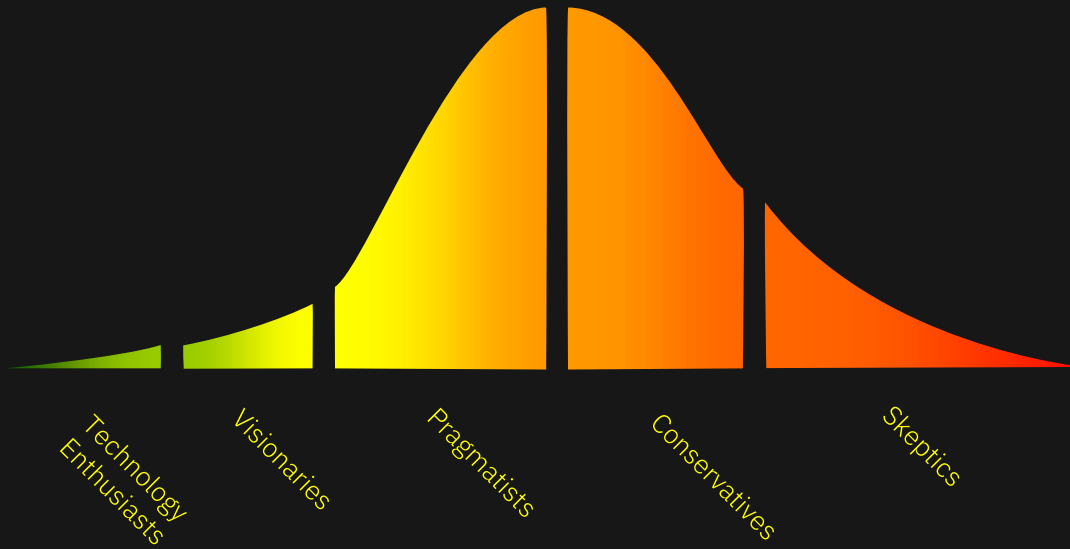
To Deliver Order of Magnitude Improvements to Progress and Growth



The future of computing

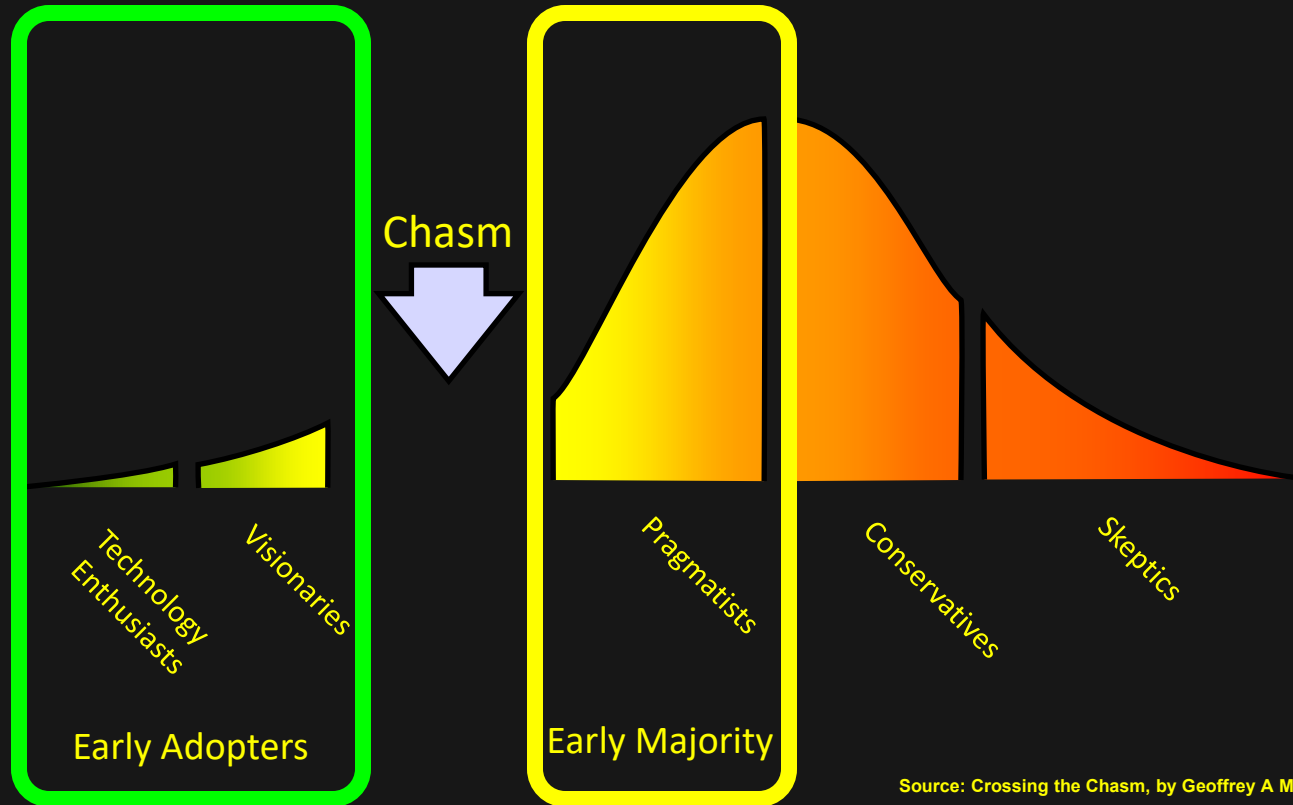


Crossing the Chasm



Source: *Crossing the Chasm*, by Geoffrey A Moore

Crossing the Chasm



Source: Crossing the Chasm, by Geoffrey A Moore



HARTREE NATIONAL CENTRE FOR DIGITAL INNOVATION



Science and
Technology
Facilities Council

Hartree Centre



Hartree National Centre for Digital Innovation (HNCDI)

- New collaborative partnership between IBM Research and STFC
- Enabling businesses and public sector organisations to adopt AI and quantum computing
- A dynamic and supportive expert environment for **UK organisations of all sizes** to explore the latest technologies, develop proofs-of-concept and apply them to industry and public sector challenges for **productivity, innovation and economic growth**.
- Helping navigate the possibilities, de-risk investment into new technologies and discover the next step



Tackling Industry and Societal Challenges

Skills

Tackling gaps within your organisation and widening the talent pool



EXPLAIN

Technical Capability

Exploring and evaluating data-driven AI technologies to help enhance productivity



EXPLORE

Application

Developing and implementing practical solutions within your business



EXCELERATE

Resilience

Knowing how to prepare for and when to invest in the right emerging technologies (e.g. quantum computing)



EMERGING TECHNOLOGY



Thank you

Dr Peter Waggett
Director of Research IBM UK Ltd

Peter_Waggett@uk.ibm.com
+44 7711537378
ibm.com

