

British Geological Survey (BGS)



BRITISH GEOLOGICAL SURVEY — STRATEGY 2023 TO 2028

Understanding our Earth



- BGS is a world-leading geological survey focused on public-good science and National Capability
- Provider of objective and authoritative geoscientific data, information and knowledge for society
- BGS is the world's oldest geological survey and is currently part of UK Research and Innovation (UKRI) and NERC

United Kingdom

UK Parliament

Parliamentary Office for Science and Technology Parliamentary committees

England

UK Parliament

Parliamentary committees

Scotland

Scottish Parliament

Parliamentary committees

Wales

Senedd

Senedd committees

Northern Ireland

Northern Ireland Assembly

NI Assembly committees

UK Government

Cabinet Office

Chief Scientific Adviser (CSA)
Government Office for Science

Department for Science, Innovation and Technology

Foreign, Commonwealth & Development Office
Department of Business and Trade
Department for Energy Security and Net Zero
Ministry of Defence
HM Treasury & Customs
Department for Culture, Media and Sport

Department of Environment, Food & Rural Affairs

UK Government

Department for Levelling Up, Housing and Communities

Scottish Government

CSA for Scotland
Digital Directorate
Energy and Climate Change Directorate
Environment and Forestry Directorate
Local Government and Communities Directorate
Marine Scotland Directorate
Tax and Fiscal Sustainability Directorate

Welsh Government

CSA for Wales
Environment, Energy and Rural Affairs
Housing and Local Government

NI Executive

Department for the Economy

CSA for NI
Department of Agriculture, Environment & Rural Affairs
Department for Infrastructure
The Executive Office

GSNI

UKRI Geospatial Commission

NERC



Coal Authority
Climate Change Committee
Infrastructure and Projects Authority
UK Hydrographic Office
HM Revenue and Customs
Met Office
National Infrastructure Commission
Network Rail
Nuclear Decommissioning Authority
Nuclear Waste Services
Oil and Gas Authority
Office for National Statistics
Ordnance Survey
UK Space Agency

Drinking Water Inspectorate
Environment Agency
Historic England
Marine Management Organisation
Natural England
National Highways
Organisation for Environmental Protection
Office for Environmental Protection
Planning Inspectorate
UK Health Security Agency

Historic Environment Scotland
Marine Scotland
Nature Scotland
Public Health Scotland
Scottish Forestry
Scottish Water
Scottish Environmental Protection Agency
Transport Scotland

Key Agencies Group (KAG)

Natural Resources Wales
Cadw (Welsh Government historic environment service)

Health & Safety Executive NI
Invest NI
NI Council for Curriculum, Examinations & Assessment
NI Environment Agency
Ordnance Survey NI

National legislature

National government

National agency/regulator

Local government

BGS/ GSNI governance

Local authorities

317 local authorities
8 city regions

Local authorities

32 local authorities
Digital Office for Local Government
Heads of Planning Scotland
Society of Local Authority Chief Executives

Local authorities

22 local authorities

Local authorities

11 local authorities
NI Local Government Authority

Our Vision

To be a leading and trusted provider of geological data and knowledge to meet societal need for a sustainable future.



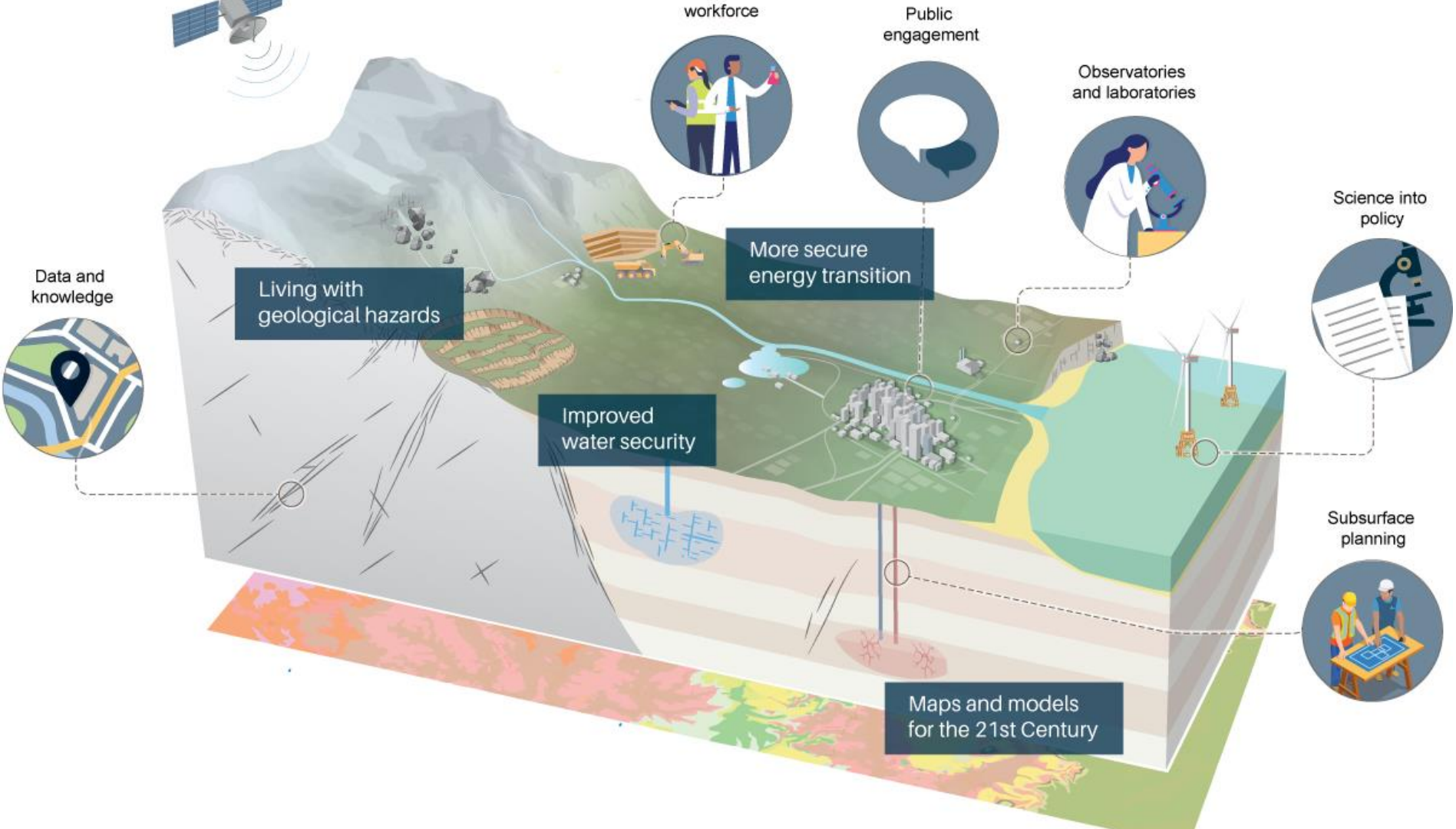
Our Mission

To use our knowledge of geology to address societal challenges.

To generate data, information and expertise through observation, analysis, and characterisation of the Earth and geological processes.

To work at local, regional, national, and global scales, and monitor at multiple temporal scales, from real-time to multi-decadal.

To be independent and impartial.



More secure energy transition



Major update to CO₂ storage database
Energy transition map and portfolio tool

 UK Critical Minerals Intelligence Centre

Review and development of the methodology and data used to produce the UK Criticality Assessment of Technology-critical Minerals

Decarbonisation and Resource Management Programme
External Report OR23/044



UK export concentration (EC)
EC = $\frac{E_{UK}}{E_{total}}$ (where E_{UK} is UK exports, E_{total} is total global supply)

UK economic vulnerability (V_e)
V_e = $\frac{V_{e,UK}}{V_{e,global}}$ (where $V_{e,UK}$ is UK economic vulnerability, $V_{e,global}$ is global economic vulnerability)

UK economic vulnerability (V_e)
V_e = $\frac{V_{e,UK}}{V_{e,global}}$ (where $V_{e,UK}$ is UK economic vulnerability, $V_{e,global}$ is global economic vulnerability)

UK export concentration (EC)
EC = $\frac{E_{UK}}{E_{total}}$ (where E_{UK} is UK exports, E_{total} is total global supply)


 British Geological Survey


Department for Business & Trade


This report does not constitute Government policy.


Mineral supply chains
And criticality


Geothermal research informing policy

 British Geological Survey

 North East


 Department for Energy Security & Net Zero


 ARUP

 north east & yorkshire NET ZERO HUB

Evidence report supporting the deep geothermal energy white paper: The case for deep geothermal energy - unlocking investment at scale in the UK

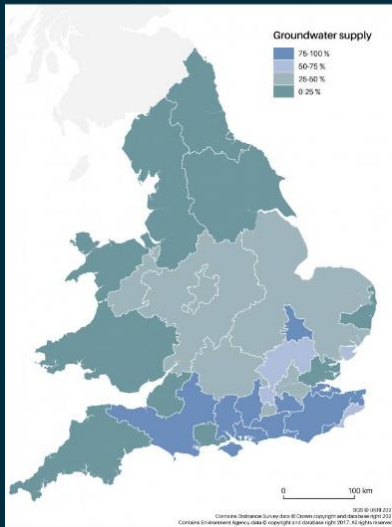
Decarbonisation and Resource Management Programme
Open Report OR23/032



 BGS

Improved water security

GROUNDWATER RESOURCES IN ENGLAND AND WALES
Groundwater for public supply

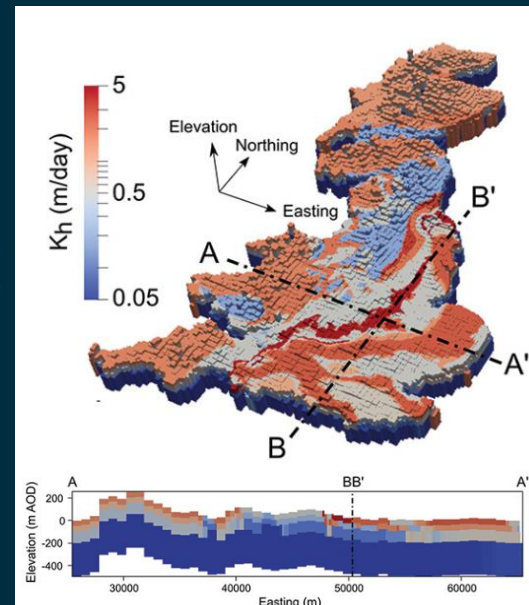


Developing methods for valuing groundwater

Application of specialist chemistry to inform land management



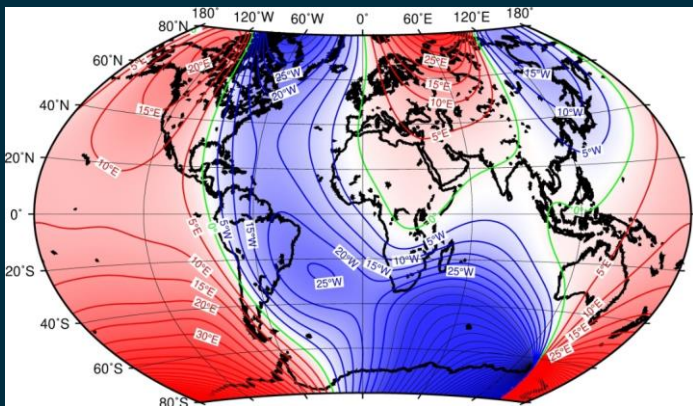
Floods and drought infrastructure project



British Groundwater model and UK water security in a rapidly changing climate



Living with geological hazards

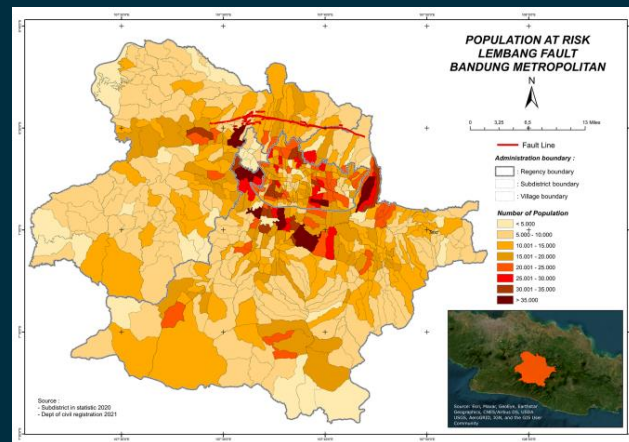


Updates to the International Geomagnetic Reference Field

Development of BGS hazards forecasting platform



Better understanding of Lembang Fault Indonesia's second city

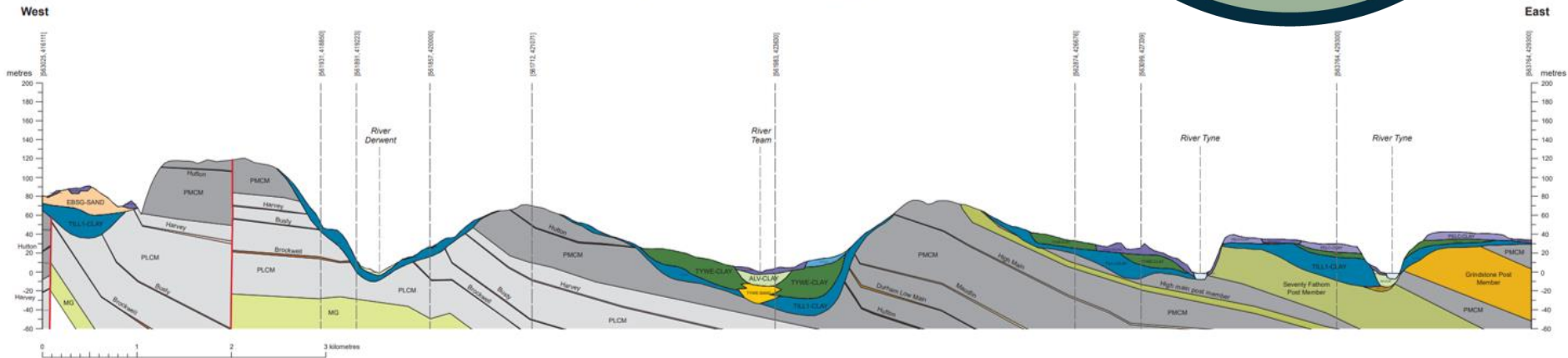


Maps and models for the 21st century

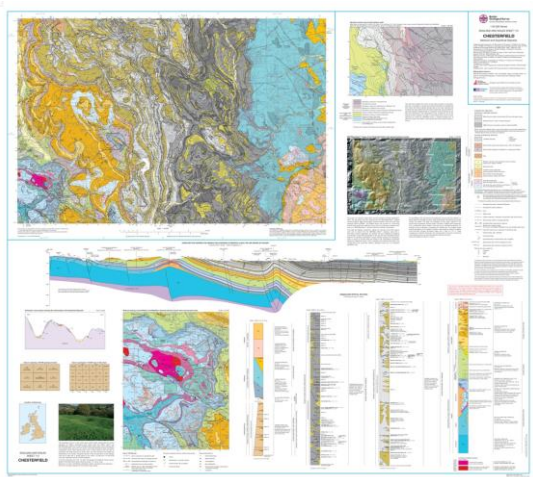
Newcastle/Gateshead urban project



CROSS SECTIONS SHOWING THE GENERAL RELATIONS OF ROCKS ALONG THE LINE 'NGF_Detailed_6'
Horizontal scale 1:50 000, vertical exaggeration 10x



BGS data products and services



CO₂ Storage database



Big national scale challenges (that need maps and models and services)

- On shore and marine/coastal area mapping
 - Energy security/Decarbonisation
 - Resource management
 - Habitat mapping
 - Spatial planning/infrastructure
 - Geohazards
 - Geoconservation
 - National Security
- Nuclear Waste Disposal
 - Energy security/Decarbonisation
 - Spatial planning
 - Characterisation of large subsurface rock volume
 - Environmental resilience over 1 m years



Key figures

BGS staff



641



54.5%
male



45.6%
female

**2023/24 publication
downloads**



369 600

2023/24 outputs:
225 peer-reviewed papers
60 book chapters, conference
papers and presentations
59 open reports

2023/24 income

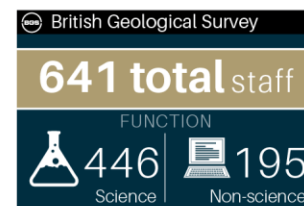
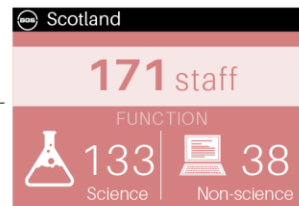
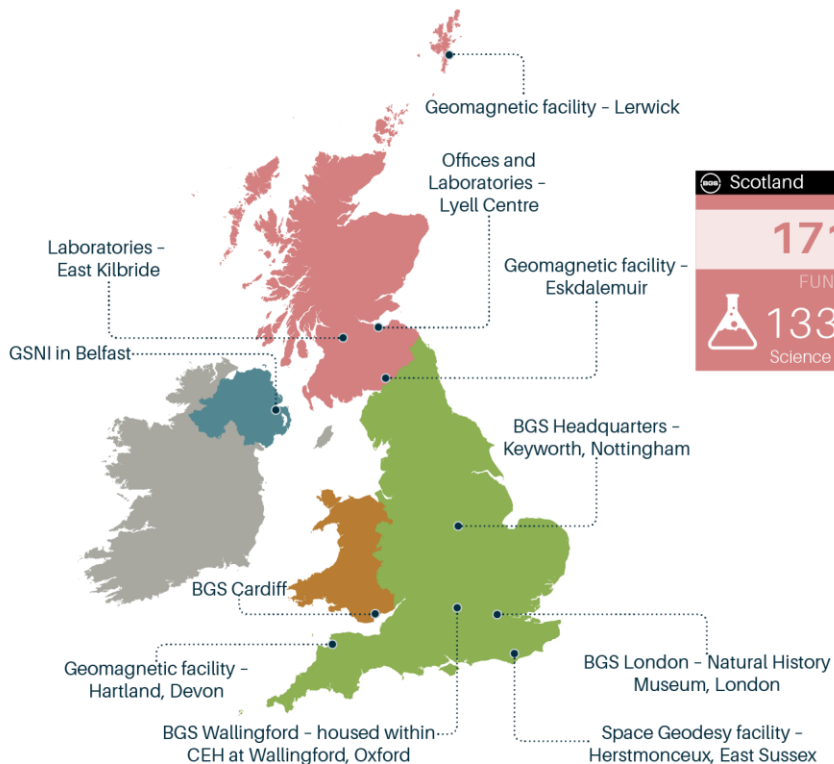


£56.50m

£23.55m NERC non-competitive
£6.8m NERC science and facilities
£26.15m other income

BGS STAKEHOLDER EVENT 2024

Our team



Staff headcount as at 31 March 2024



THANK YOU